

Part Number: KTM-530-8-EXCR

Description: Dual Sport Saddle

Fitment: 2008 KTM 530 EXC-R

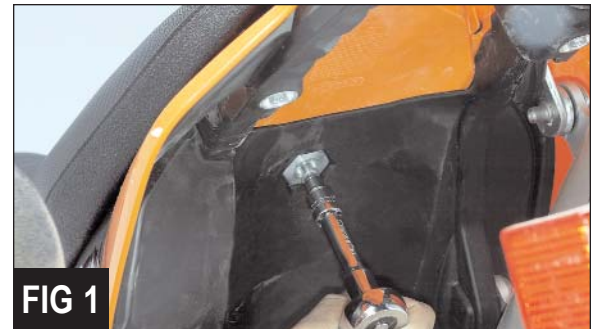
Revision: 1



Tools Required	Parts List
4mm Allen Key 8mm Socket wrench 10mm Socket wrench	1 6m x 20 Chrome button head Allen bolt 1 6m Chrome flat washer 1 Aluminum Spacer 1 6mm x 20 Hex head bolt 1 3/16" Flat washer

Saddle mounts to your KTM just like stock with brackets preinstalled on the Corbin seats.

1. Remove your stock seat by removing the socket head bolt from underneath the tail section by using a 8mm socket wrench (*Figure 1*).



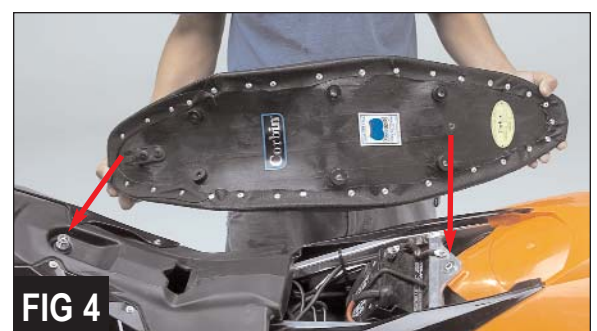
2. Remove the stock bolt on the gas tank with a 8mm socket wrench (*Figure 2*), but leaving the stock aluminum spacer in place.



3. After removing the stock bolt from the gas tank, replace it with the supplied Allen bolt, flat washer, spacer and the stock aluminum spacer, using a 4mm Allen key (*Figure 3*). Tighten to 8 ft. lbs. and use Loctite®.



3. Next, simply slide the saddle onto the bike nose first engaging the tongue. Lower the seat into position and secure it underneath the tail section with the supplied 6mm hex head bolt and flat washer, using a 10mm socket wrench. (*Figure 4*)



Questions? Give us a holler...
800-223-4332
tech@corbin.com